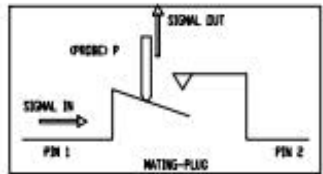
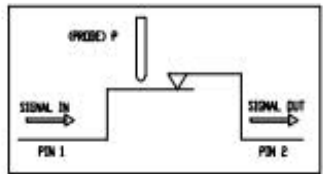
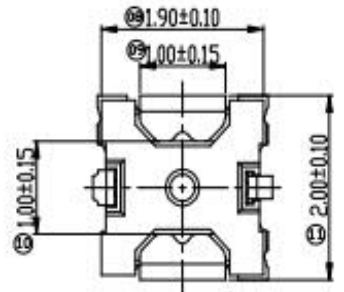
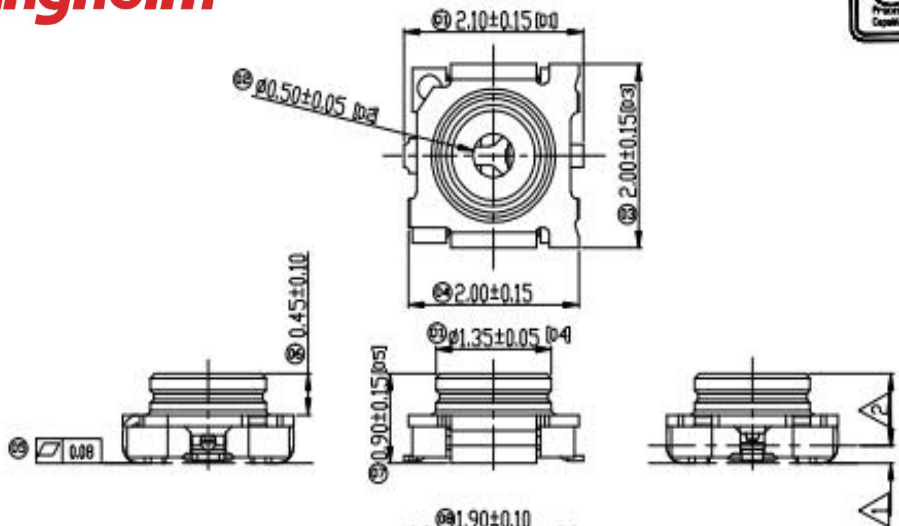
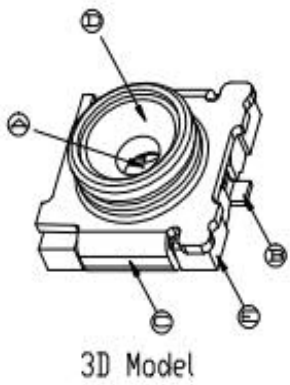
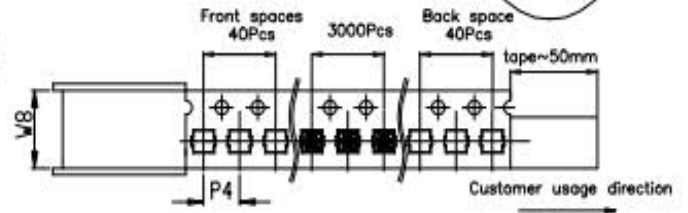
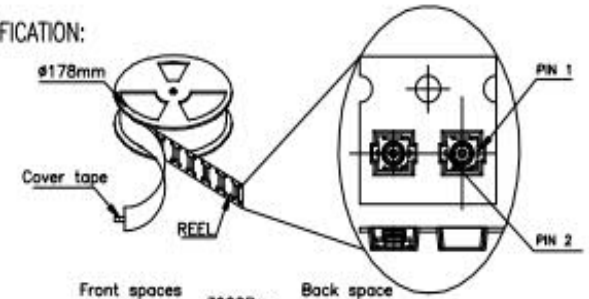
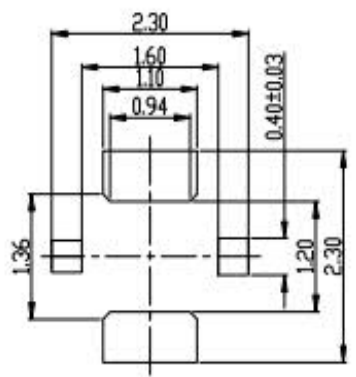
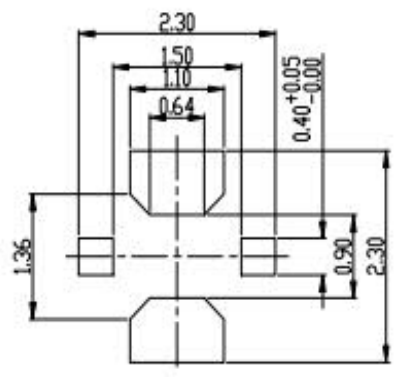
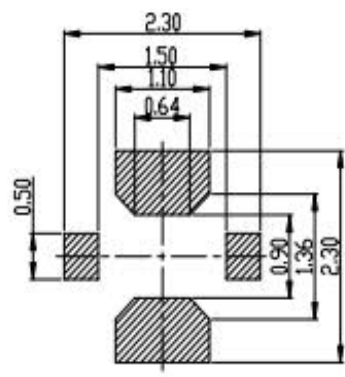


PACKING SPECIFICATION:



- NOTES:
- 1.1 Rated Voltage: 50V AC max.
 - 1.2 Frequency Range: DC ~ 11GHz
 - 1.3 Impedance: 50Ω
 - 1.4 Power Rating: 2W
 - 1.5 Operating Temperature: -40°C ~ +85°C
 - 1.6 Insertion Loss: 0.30dB max. (30GHz)
 - 1.7 Withstanding Voltage: 300V AC & Inverse
 - 1.8 Initial Contact Resistance (Without conductor resistance): 70mΩ max.
 - 2.1 Voltage Standing Wave Ratio (VSWR): 1.3 max. (30GHz), 1.5 max. (50GHz)
 - 2.2 Insertion Loss: 0.18dB max. (DC~30GHz), 0.30dB max. (30GHz), 0.60dB max. (50GHz)
 - 2.3 Isolation: 20 dB min. (DC~30GHz), 15 dB min. (30GHz), 18 dB min. (50GHz)
 - 2.4 Durability: 100 cycles
 - 3.1 Packing: tape & reel 200Pcs/Reel (Φ178mm)
 - 3.2 TR Reflow CYCLE: See spec



ITEM	DESCRIPTION	Q'TY	MATERIAL/FINISH
①	DOWN HOUSING	1	LCP UL94V-0/BLACK
②	TOP HOUSING	1	LCP UL94V-0/BLACK
③	SHELL	1	Copper Alloy/ Ni:50u" Min Copper Alloy/Au:2u" Min; Ni:50u" Min
④	PIN 2	1	Stainless Steel/Au:2u" Min; Ni:50u" Min
⑤	PIN 1	1	Stainless Steel/Au:5u" Min; Ni:50u" Min

BOM LIST

深圳市金航标电子
有限公司
WWW.BDS666.COM
0755-83044319

GENERAL TOLERANCE	SCALE: 1:1	DRAWN: Martin	DATE: 03/07'17	DWG. NO.: 600-11998-01	TITLE: CUSTOMER DRAWING	REV.: A
XX ±0.50	UNIT: mm	CHECK: Ken	DATE: 03/07'17	PARTS NO.(INTENDED USE): KH-202110-3	MINI RF III CONN., L2.00*W2.00*H0.90mm	SHEET 1/1
X ±0.35 .X ±0.25 .XX ±0.15	SIZE: A4	APPROVE: Yan	DATE: 03/07'17			